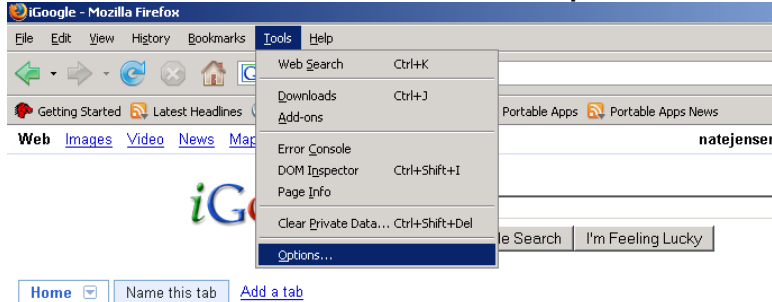


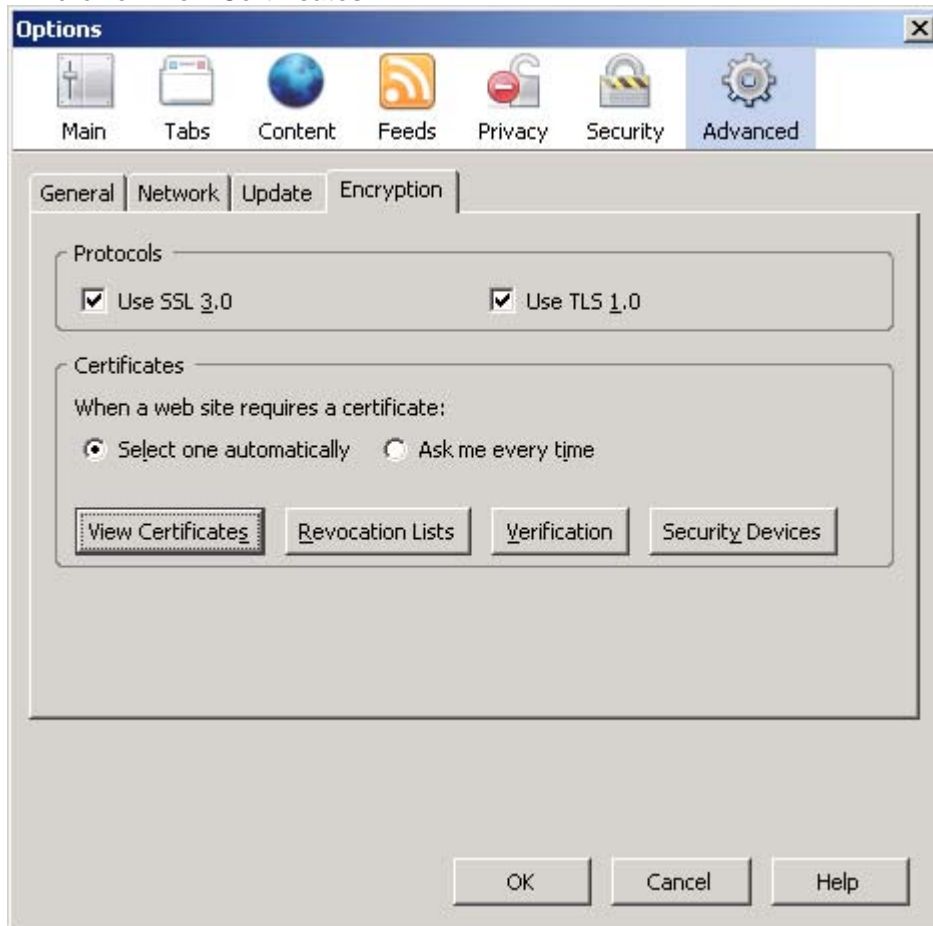
## Importing your Certificate from Backup Copy - Firefox

From the Mozilla Firefox browser,

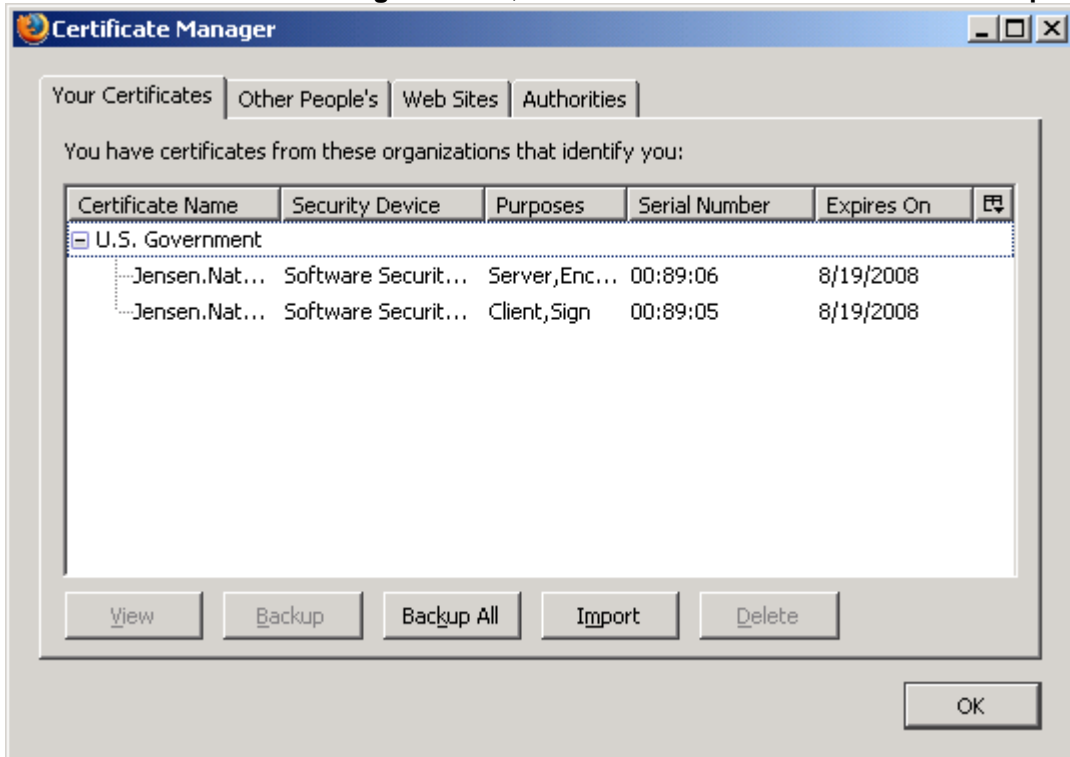
1. From the Firefox menu bar, select **Tools**→ **Options...**



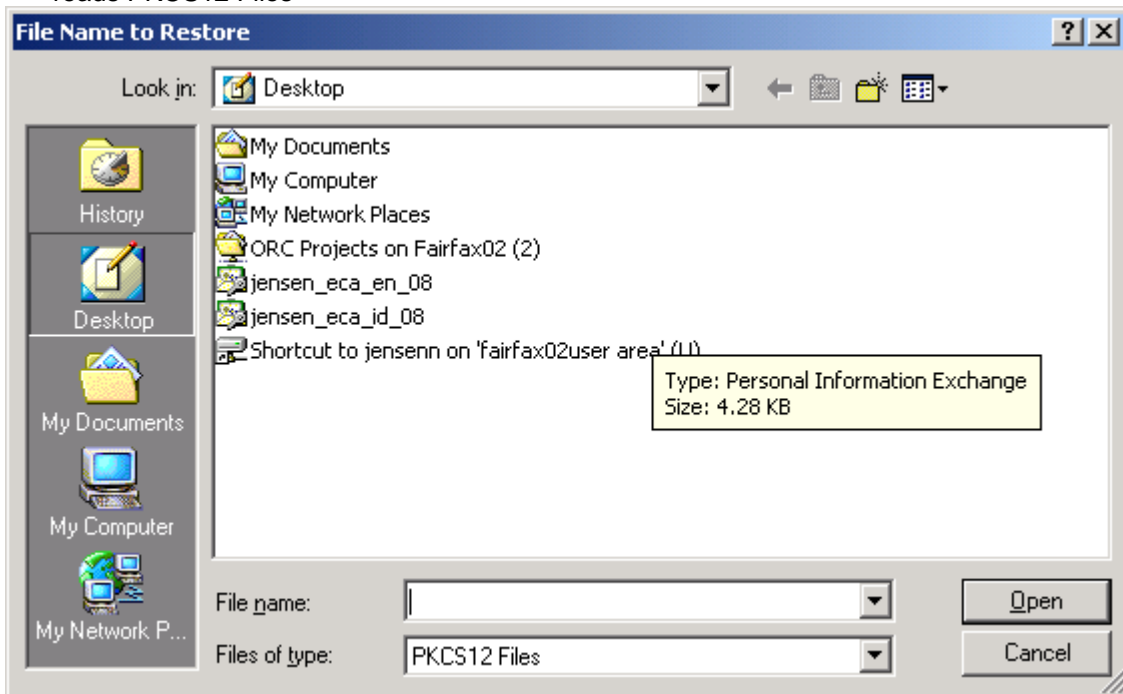
2. From the **Options** window, click on **Advanced** icon, click on **Encryption** tab, and then click on **View Certificates**.



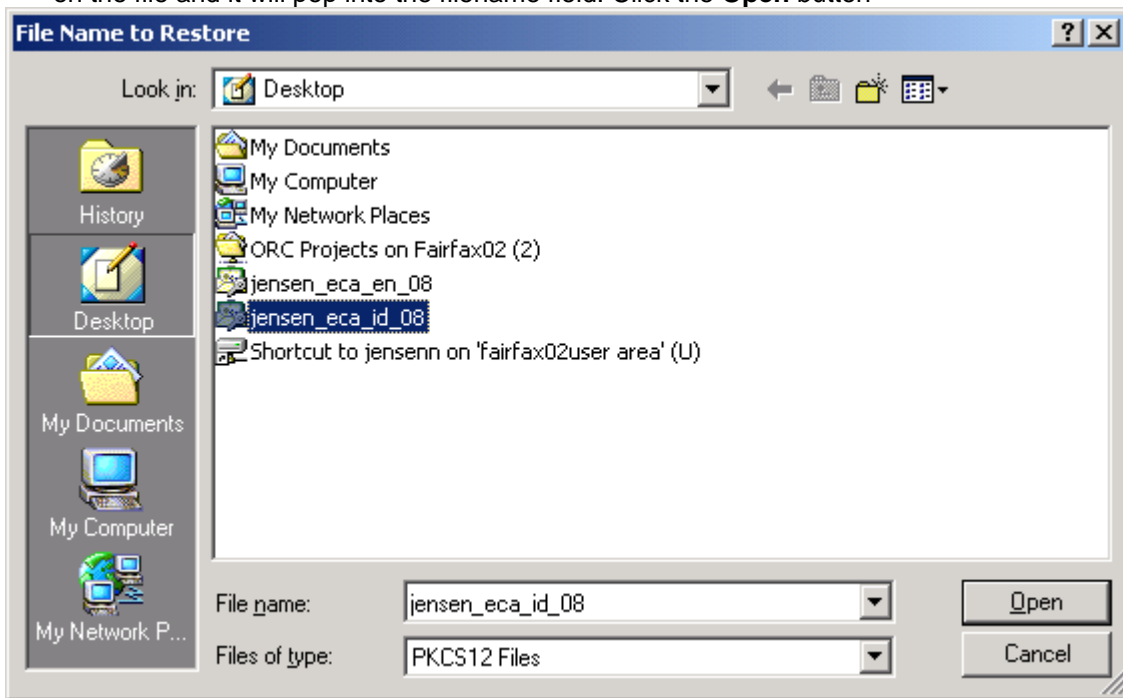
3. From the **Certificate Manager** window, click **Your Certificates** tab and click on **Import**.



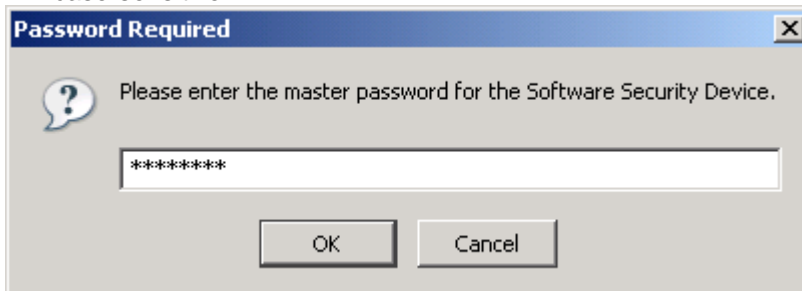
4. In the **File Name to Restore** dialogue box, make sure the **Files of type:** pull down menu reads PKCS12 Files



5. On the **File Name to Restore** window, navigate to the location of the external device (e.g. diskette, CD, flash drive) where you saved your operational copy of certificate. Click on the file and it will pop into the filename field. Click the **Open** button



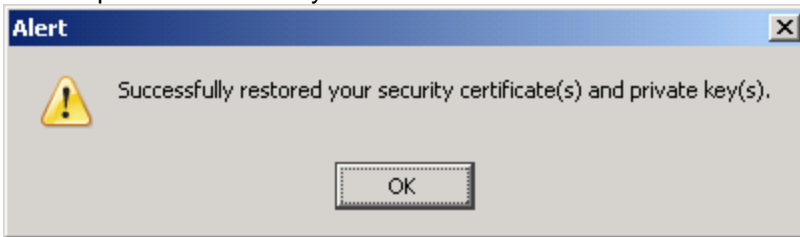
6. The **Master Password** dialog box will appear. Type in the password that you set for the software security and then click "OK". Please note that your private key password is case-sensitive.



7. The **Password Entry Dialog** box will come up. This one is the password you set when you originally saved your certificates to your PC or external device. After entering the password, click "OK"



8. The next window that comes up should be an alert telling you that your certificates and private key were imported successfully.



9. If you have both Identity and Encryption Certificates (ID/EN pair), you must perform this procedure once for each certificate.